

DEPARTMENT 17  
FLORAL EXHIBITS

Superintendents: Laura Steele (570-297-4547/ljs447@hotmail.com)  
Barb Andrus (570-297-3043/bajandrus@gmail.com)

PRIZES EACH ENTRY: 1<sup>st</sup> \$3.00 2<sup>nd</sup> \$2.00 3<sup>rd</sup> \$1.00 4<sup>th</sup> \$.50 FOR ALL SECTIONS 1-11

**AWARDS FOR SENIOR & JUNIOR DIVISIONS**

**SWEEPSTAKES AWARD** – Exhibitor with the greatest number of blue ribbons in the show - \$5.00

**GRAND CHAMPION** – Exhibitor judged to have the finest exhibit in Department 17 - \$5.00

**BEST OF SHOW AWARDS** – Best exhibit in plants; Best exhibit in specimen flowers - \$5.00 each

**MOST UNUSUAL AWARD** – Plant or flower exhibit judged to be most unusual - \$5.00

**HERITAGE GARDEN CLUB TROPICAL AWARD** – Any plant judged to be best tropical plant - \$5.00

**DAN ROY MEMORIAL AWARD** – Best exhibit in Large Display - \$5.00

**GENERAL RULES**

**SENIOR DIVISION: 17 YEARS AND OVER**

**JUNIOR DIVISION: 16 YEARS AND UNDER**

1. Exhibits should be entered between 9:00 AM and 3:00 PM on Saturday, July 20<sup>th</sup>, 2019. Doors close at 3:30 PM for judging. Exhibits may not be removed until Sunday, July 28<sup>th</sup> between 9:00 AM and 12:00 noon.

2. The exhibitor must have grown all plants/flowers entered for competition. Plants must have been the property of the exhibitor for at least two months prior to the time of exhibition. EXCEPTION: SECTION 10 – Wildflowers in arrangement. NEW SECTION 11 – Petite Design.

3. The exhibitor is limited to one entry in each class or sub-class to be judged. (e.g. Section 9, Class 41A, Rose, Tea). Exception: Exhibitors may enter more than one entry in classes labeled "other", if the entries are of different varieties, since each variety will be judged separately at the discretion of the judges. (e.g. One exhibitor may enter Section 9, Class 57, Agastache and also, Section 9, Class 57, Campanula). In other words, exhibitors should be putting only their best entry in each class. No exhibitor will be awarded more than one prize for each variety.

4. Please write the Botanical name of your flower or plant! Please look it up beforehand if you do not know it. The Botanical name will include its Genus, species, variety/cultivar and/or common name. (This aids in the classification of specimen flowers at the time of entry particularly for all Sections with other and Section 9 Class 57 other.

EXAMPLE: *Agastache* (Genus name) *foeniculum* (Species name) Anise Hyssop (Common name)

5. Any plant or flower manifestly unfit to show may be excluded by the management, and the management may at *any time* order the removal of an exhibit which is in bad condition or is infested with noxious insects or diseases.

6. It is recommended to condition specimen flowers prior entry. Cut stems at an angle 1-3 days prior showing and immediately placing open end of the stem in clean water and clean container. Select specimen flower in earliest opening from the bud stage or late bud stage imminently ready to bloom. Place plant in cool, dark relatively draft free area for 12-24 hours.

7. Maximum care will be taken of the plants, containers, and accessories until exhibitors can reclaim them but the Fair cannot be held responsible for any damage or loss. *Please do not use any valuable and/or favorite vases!*

8. Exhibitor is responsible for furnishing vases. (NO PAPER OR STYROFOAM CUPS). With container-grown plants, the appropriateness of the container will be considered in judging. Please place a drainage plate under pots.

9. NO artificial flowers permitted. Only Dish Gardens, Fairy Gardens, Terrariums, and Large Displays may include artificial, decorative items, however living plants must predominate.

HINT: Self-sticking address labels are helpful for multiple entry tags. If you are entering multiple tags you can purchase the tags from the Superintendents ahead of entry day, they will give you an entry number to write on all your tags.

10. In the NEW Section 11 – Petite Design – make every effort to conceal mechanics used to give your design a characteristic shape that may be unnatural for the plant which would be using creativity in design. The mechanics means wiring, gluing, water tubes and the like.

**Section 1**  
**FLOWERING CONTAINER-GROWN PLANTS**

CLASS

1. African Violets: (*Saintpaulia inonantha*)
  - A. Single
  - B. Double
  - C. Miniature
  - D. Dish Garden – Collection of 3 or more violets in a container.
  - E. Other
2. *Begonias*
3. Cyclamen
4. Geraniums (*Pelargoniums*)
5. Impatiens
6. *Orchidae*
  - A. *Cattleya* –Easter orchid
  - B. *Paphiopedilum* – Lady’s Slipper
  - C. *Dendrobium*
  - D. *Cymbidim* -
  - E. *Phalaenopsis* – Moth Orchid
  - F. Any other orchid
7. *Oxalis* (Shamrock plant)
8. Others

**Section 2**  
**FOLIAGE CONTAINER-GROWN PLANTS (non-flowering)**

CLASS

1. *Begonias*
2. *Bromeliaceae* – Air plant and bromeliad
  - A. *Tillandsia ionantha* – Sky plant
  - B. *Abdita* – Red form
  - C. *Achrostachys*
3. Coleus (*Plectranthus*)
3. Ferns
4. Ivy
5. Pothos
6. Others

**Section 3**  
**DISH GARDEN**

**3 or more types of plants arranged & growing in a container.**  
**Container may not be greater than 18 inches in any dimension.**

CLASS

1. **Flowering Dish Garden** (except African Violet Dish Gardens in Section 1)
2. **Foliage Dish Garden** (Except Cacti & Succulent Dish Gardens in Section 7)
3. **Fairy Dish Garden** - Should create a miniature enchanted landscape where a tiny fairy could dwell. Should include 3 or more flowering and/or foliage living plants in an appropriate open, shallow container (maximum 18" length or width x maximum 8" high. It may include miniature pathways, dwellings, furniture, etc. but at least 50% of the garden must be living plants. To be judged on creativity and originality, composition, balance and proportional scale of design as well as health and cultural perfection of plant material.

**Section 4**  
**TERRARIUM OR CLOSED CONTAINER**

(may include accessories, small amphibians, etc. but should be predominantly living plants)

- CLASS 1. All Terrariums – any size

**Section 5**  
**BONSAI**

- CLASS 1. By Form: A. Upright B. Broom C. Slanting D. Windswept E. Multiple Trunks F. Group G. Cascade H. Root over Rocks I. Other

**Section 6**  
**HANGING PLANTS**

**(A hanging plant will be judged on appropriateness to hanging form as well as condition, etc.)**

CLASS

1. Hanging Plants – Flowering A. Fuchsia B. Petunia C. Other
2. Hanging Plants – Foliage A. Fern B. Ivy C. Other

**Section 7**  
**CACTI AND SUCCULENTS**

CLASS

1. *Cacti* A. *Epiphyllum* – Orchid Cactus B. *Schlumbergera gaetneri* (*Rhipsalidopsis*) – Easter Cactus C. *Schlumbergera truncate* - Christmas Cactus D. Other
2. Succulents A. *Agave* B. *Aloe* C. *Crassula* - Jade D. *Echeveria* E. Hens & Chicks F. *Kalanchoe* G. Other

3. Dish Garden – (3 or more types of cacti and/or succulents in a container)

**Section 8  
LARGE DISPLAYS**

**(1 or more plants grown in barrels, wagons, tubs, etc. - containers larger than 18" in any dimension)**

CLASS

1. Best Large Display will be awarded the Dan Roy Memorial Award - to be judged on creativity, originality, composition, and balance of the overall design, as well as health and perfection of the blooms and plant material.

**Section 9  
SPECIMEN FLOWERS**

Exhibits must be cut flowers grown by the exhibitor for 2 months.

The uniformity of color and size, cleanliness, and freshness are important factors in judging entries.

Flowers in each entry must be of one variety.

Leaves below the water line must be removed. (One exception – Gladiolus)

No wires, ribbons, or attachments. Wedging material can be a sprig of evergreen, plug of plastic wrap, Styrofoam, wood, etc.

Wedging may be visible, but must not detract from the specimen.

Three (3) stems are required unless otherwise stated.

CLASS

1. *Angelonia*
2. *Aster*
3. Baby's Breath (*Gypsophila*)
4. Bachelor's Button, annual (*Centaurea cyanus*)
5. Bachelor's Button, perennial (*Centaurea montana*)
6. Bee Balm, Bergamot (*Monarda*)
7. Blanket Flower (*Gaillardia*)
8. Butterfly Bush (*Buddleia*)
9. Calla Lily (*Zantedeschia*)
10. *Celosia*
  - A. crested (1 stem) B. plumed (3 stems)
11. Coneflower (*Echinacea*)
12. Coral Bells (*Heucheras*)
13. *Coreopsis*
14. *Cosmos*
15. Cranesbill ("hardy" *Geranium*)
16. *Dahlia*
  - A. Large Dinner Plate (1 stem) B. Small (3 stems)
  - C. Button D. Cactus (1 stem) E. Pompon
17. Daylily (*Hemerocallis*) (1 stem)
18. *Delphinium* (1 stem)
19. *Dianthus* (Pinks, Sweet William)
20. *Gazania*
21. Geraniums (*Pelargoniums*)
22. *Gerbera* (African daisy)
23. *Gladiolus* (1 spike in bloom- Place in tall thin vase)
24. Globe Thistle (*Echinops*)
25. Gooseneck Loosestrife (*Lysimachia clethroides*)
26. *Helianthus* (Golden Glow, Perennial Sunflower)
27. Hollyhocks (*Alcea*) (1 stem)
28. *Hydrangea* (1 stem)
29. *Lantana*
30. Lily (*Lilium*)
  - A. Asiatic B. Oriental C. Stargazer D. Other
31. Lily – Wild or Native lilies (1 stem)
  - A. Turk's Cap (*Lilium superbum*)
  - B. Wood Lily (red- orange) (*L. philadelphicum*)
  - C. Meadow Lily (creamy orange) (*L. canadense*)
  - D. Tiger lily (Orange) (*L. lancifolium*)
32. Marigold (*Tagetes*)

- A. Single (daisy like) *T. tenuifolia* (signet marigold) tiny blooms
  - B. Semi- Double *T. patula* (French marigold) flower head is smaller and may be single or fully – double, *T. lucida* (Mexican mint marigold) fragrant foliage
  - C. Crested *T. patula* large double flowers with crested centers
  - D. Fully–Double *T. erecta* (American marigold, African marigold) large, solitary, pompom flower head often crested
33. Million Bells (*Calibrachoa*)
34. *Nasturtium*
35. Pansy (*Viola*)
- A. Field Pansy (*V. arvensis*)
  - B. Miniature 1. Common blue violet (*V. sororia*) 2. Heartsease or Johnny-jump-up (*V. tricolor*). 3. Alpine dog violet (*V. labradorica*)
  - C. Other
36. Peony (*Paeonia*)
- A. Anemone B. Double C. Semi-Double D. Single E. Japanese
37. *Petunia*
- A. Single B. Double C. Fringed or Ruffled
38. Phlox, Garden (*Phlox paniculata*)
39. Pincushion Flower (*Scabiosa*)
40. *Portulaca*
41. Pot Marigold (*Calendula*)
42. Rose (*Rosa*) (1 stem)
- A. Tea B. Multi-flowered C. Miniature D. Other
43. *Rudbeckia* (Gloriosa Daisy, Black-eyed Susan)
- A. Single (*R. fulgida*, *R. triloba*, *R. occidentalis*, *R. Californica*, *R. alpicola*)
  - B. Double (*R. Moroccan sun*, *R. Cherokee sunset*)
44. Russian Sage (*Perovskia atriplicifolia*)
45. *Salvia*
46. Sea Holly (*Eryngium*)
47. Shasta Daisy (*Leucanthemum*)
48. Snapdragon (*Antirrhinum*)
- A. Tall (1 stem) B. Short (3 stems)
49. Statice (*Limonium*)
50. Strawflower (*Helichrysum*)
51. Sunflower, Annual (*Helianthus annuus*) (1 stem)
52. Sweet Pea (*Lathyrus odoratus*)
53. Tansy (*Tanacetum vulgare*)
54. *Veronica* (Speedwell, Georgia Blue, etc.)
55. Yarrow (*Achillea*)
56. *Zinnia*
- A. Single—one row of petals and the centers are exposed –e.g. *Z. acerosa*, *Z. angustifolia* daisy like, narrowleaf, *Z. tenuifolia* (red spider zinnia)
  - B. Semi-Double –many rows of petals and the center can still be seen, typically Dahlia flowered types- e.g. *Z. elegans* (common), *Z. pumila*
    - a. Crested/anemone-- flowered-full cushiony centers- *Z. Elegans* ‘Gumdrop Candy’
  - C. Double--have so many rows that centers are hidden. There are several types;
    - a. Beehive-small blooms with flat petals stacked
    - b. Button-are similar with flatter flowers
    - c. Cactus flowered-petals twisted bent petals with rolled edges, tubular, quilled, ruffled, quilted up to 6”
57. Other - Any unique variety specimen flower\* not listed above. (\*non-flowering such as coleus will not be judged)  
Each entry must be of one variety, however exhibitors may enter more than one variety in this class (57):  
1 stem for large flower  
3 stems for small flowers

**Section 10**  
**WILDFLOWERS IN ARRANGEMENTS**

No professionals- limit one entry per class  
No plants forbidden by conservation rules may be used

**CLASS**

1. Arrangement of Wild Flowers: 12” high or under, including container
2. Arrangement of wild Flowers: Over 12”, including container
  - Arrangement can be made with any type and any amount of wild flowers.
  - The container can be in a vase, jar or any non-valuable container like a pitcher, old shoe, etc. It must be the appropriate size for the height of the flowers.
  - The name of the wild Flowers do not need to be identified (however, you may identify each flower, doing so will promote education of wild flowers and knowledge of native plants).

**A wild flower is a flower that grows in the wild, meaning it was not intentionally seeded or planted.**

Examples; Fleabane, Queen Ann’s Lace (wild carrot), Jerusalem Artichoke, Wild Lupine, Black-eyed Susan, Dame’s Rocket, Chickory, Forget-me-nots, Aster and wild orange Daylily to name a few.

**Section 11**  
**Petite Design**

**Class 1. “FanFair”**

To be staged on a shelf that will be eye-level.

The allotted space is 8” wide X 8” deep X 8” tall for the underlay and back panel is required.

The design size must be in proportion to the height, width and depth of underlay.

The underlay and back panel can be made of stiff cardboard or foam board and can be

Painted, covered with fabric, anything that will enhance the design.

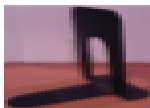
Must have a small amount of plant material in the design.

Plant material to be dried and does NOT have to be grown by the exhibitor.

Small objects reflecting the “celebration of the fair” can be used in the design.

For example; musical instrument, paint brush, tractor, ferris wheel, tickets, etc.

A 3 x 5 card listing the names of the plant material used and if your design has a theme title.



[This Photo](#)  
by  
Lilithonem  
Author is  
licensed  
under a  
CC  
BY-NC

Example of an underlay and back panel. A book end can be used to mount the under and back panels.

**Class 2. “TEALIGHTFUL”**

To be staged on a shelf below eye level.

The allotted space is 10” wide X 10” deep X 9” high.

Optional for underlay and back panel.

A **tea cup** and **saucer** is to be incorporated into the design.

Fresh or dried plant material to be used in or around the tea cup.

Plant material need not be grown by the exhibitor.

A 3 X 5 card listing the names of the plant material used and if your design has a theme title.